

PRODUCT CATALOG

TRUCK & BUS RADIAL TYRES



A BRIEF RIDE THROUGH HISTORY

After a decade of promising growth, Armstrong purchases a small tyre manufacturing concern in New Haven, Connecticut.

1912

A tyre dealer in New Jersey by the name of George F. Armstrong enters the tube & pneumatic tyre industry in a tiny loft.

1922

1961

Armstrong became the fifth largest tyre maker in the world, and ranked amongst the Fortune 500 companies.

Armstrong introduced the first bias-belted fiberglass tyre, one of many inventions.

1965

1970

The Armstrong Rubber Company moved into its \$7 million headquarters designed by renowned architect Michael Brauer in New Haven, Connecticut.

Armstrong achieved a record sales volume worth \$1 Billion.

1986

1988

Armstrong was acquired by Pirelli S.p.A, becoming Pirelli Armstrong Tyre Corporation

Pirelli phases out the Armstrong brand in the latter half of the 1990's.

1990

2012

ZAFCO acquired the Armstrong brand from Pirelli with the goal of rebuilding it from the ground up.

Newly reengineered, the Armstrong brand returned to the tyre industry, continuing the Armstrong legacy of making premium products by quality-minded people.

2015

2019

Armstrong launched in Europe.

ABOUT US

Armstrong Tyres was founded in 1912 by George F. Armstrong in a small New Jersey loft. By the early 1960s, Armstrong had become a well-known tyre brand and the 5th largest tyre manufacturer in the world.

Over the past years, we've been steadily working to bring back this trusted American tyre brand - and modernising it into a premium product offering. The next generation of Armstrong tyres is dedicated to quality, value and safety. We're proud of continuing the Armstrong legacy of making quality tyres by quality-minded people.



WHY ARMSTRONG?

VALUE-DRIVEN PRICING PROGRAM

Our unique pricing program is designed to provide the highest value at the lowest possible cost and grow your profit margins.

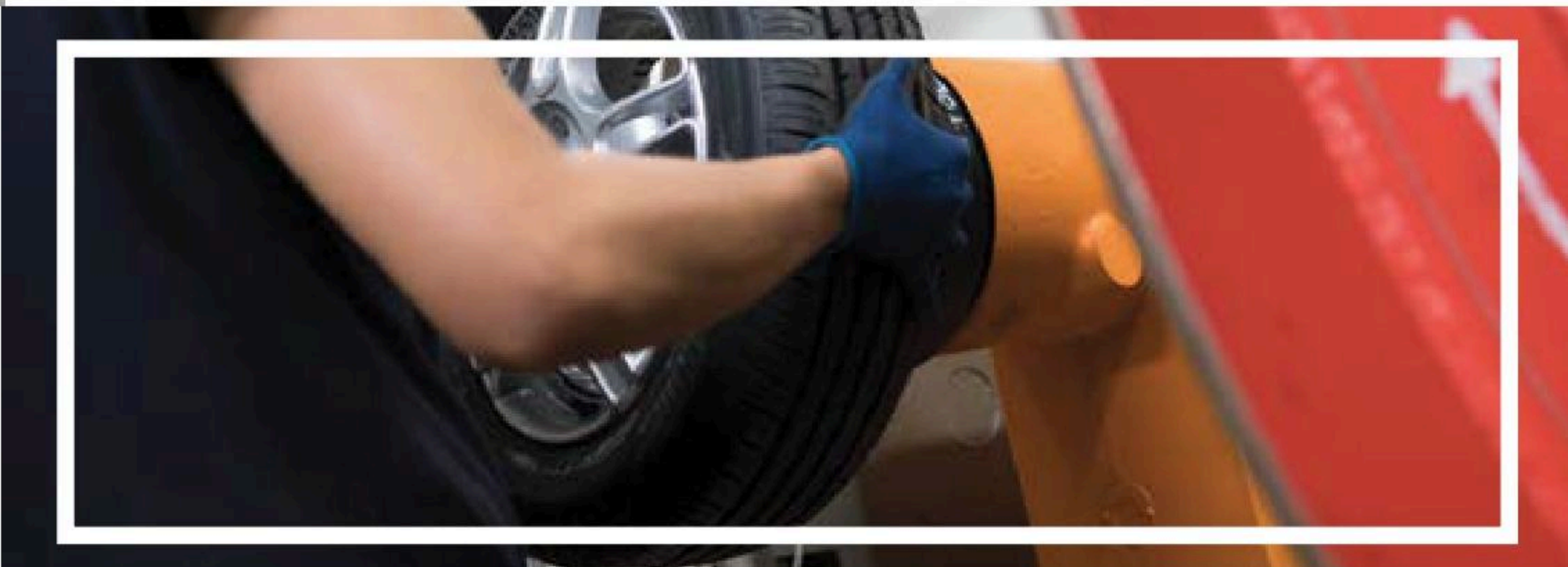


RECOGNIZABLE NAME WITH A RICH LEGACY

The Armstrong name was once a household name listed as a Fortune 500 company and the fifth largest tyre manufacturer in the world.

SOPHISTICATED SAFETY MEASURES

Each tyre is x-ray inspected and subjected to thorough testing for performance, durability and safety before leaving our factory floor.



CASING INTEGRITY

The remarkable casing integrity of Armstrong tyres enable them to withstand more retreads over time, increasing lifespan, and ultimately reducing disposal in landfills.

A STELLAR SUITE OF SELL-OUT SUPPORT

Armstrong dealers receive sell-out support including training resources and marketing programs, so you have all the sales tools you need at your fingertips.



TYRE LINE-UP

STEER

DRIVE

TRAILER

ALL POSITION

LONG-HAUL & REGIONAL →



ASH11+



ASH12



ATH11

REGIONAL →



ASR12



ASR+



ASR1+



ADR11



ADR12



ADR1



ATR12



AOR1



AOR3

ON/OFF ROAD (MIXED SERVICE) →



ASM11



ADM11



AOM



AOM11



AOM1



AOM2



AOWH+

CONSTRUCTION →



ASG11



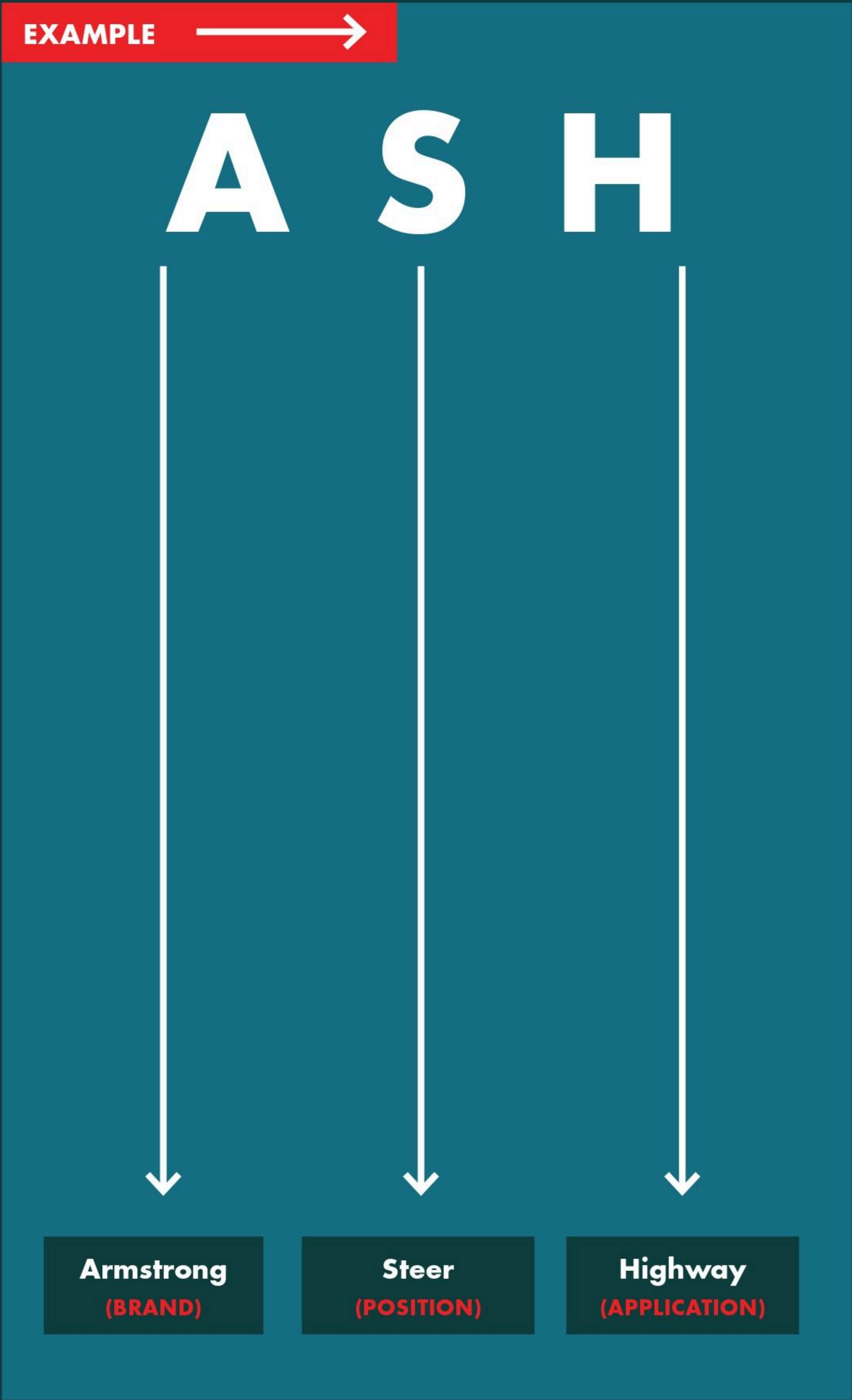
ADG11

URBAN →



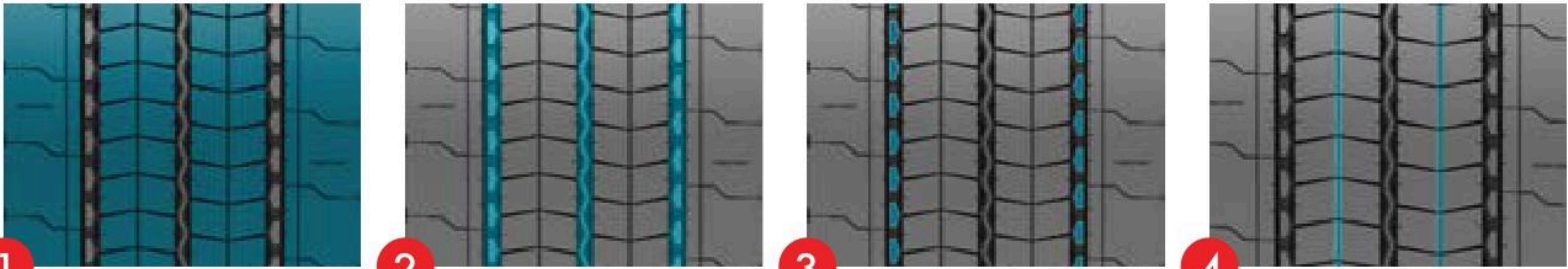
AOU11

TYRE PATTERN NAME GUIDE



LETTER	DEFINITION	TYPE
A	Armstrong	Brand
S	Steer	Position
D	Drive	Position
T	Trailer	Position
O	Omni (All Position)	Position
H	Highway	Application
R	Regional	Application
M	Mixed Service	Application
G	Gravel	Application
U	Urban	Application

ASH11+ /



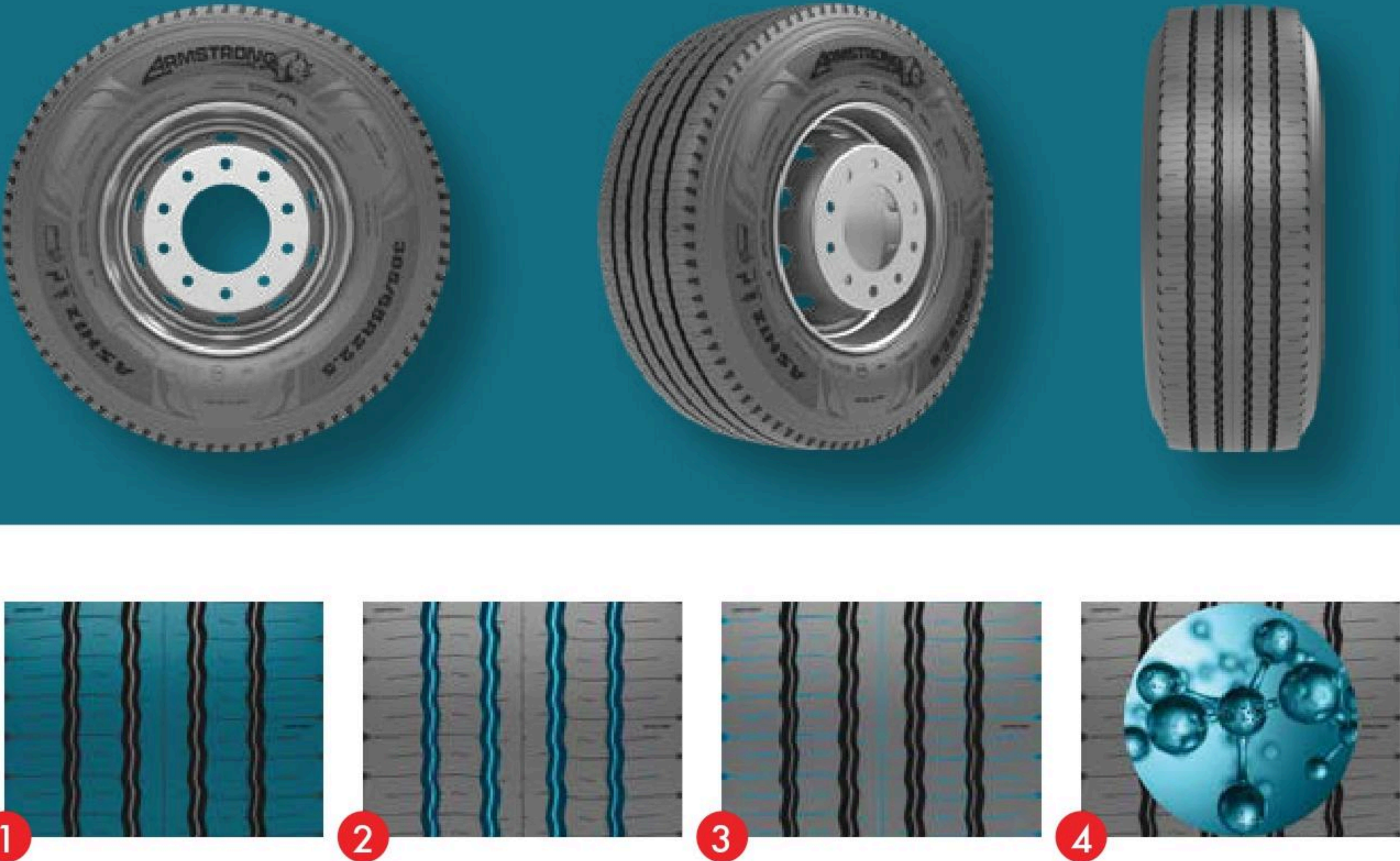
1. **A COMPACT TREAD DESIGN** provides increased mileage and reduces operating costs.
2. **THREE WIDE LONGITUDINAL GROOVES** offer enhanced grip during all road conditions.
3. **CONTINUOUS STONE EJECTORS** on outer grooves reduce stone retention and drilling for enhanced casing life.
4. **SELF-GENERATING TREAD** blocks with hidden grooves that appear as the tread wears to offer better traction and safety.

TYRE SIZE	PR	LOAD INDEX	SPEED SYMBOL	TREAD DEPTH
				(MM)
295/60R22.5	16	150/147	L	14.0
295/80R22.5	16	152/148	M	14.0
295/80R22.5	18	154/149	M	14.0
315/60R22.5	16	154/148	L	14.0
315/70R22.5	16	154/150	M	14.0
315/70R22.5	18	156/150	L	14.0
315/80R22.5	20	156/150	L	14.0
315/80R22.5	22	158/150	L	14.0

POSITIONS →



ASH12/



- 1. **STRONG SHOULDER RIBS** and a five-rib tread pattern designed for exceptional steering, while a pyramid-base rib design offers reduced rolling resistance that evolves with wear.
- 2. **FOUR WIDE ZIGZAG GROOVES** specially designed to ensure quicker water evacuation and avoid stone trap and casing damage.
- 3. **SPECIALLY DESIGNED SIPES** reduce braking distance and increase resistance against irregular wear.
- 4. **AN INNOVATIVE TREAD COMPOUND** provides higher mileage and lower fuel consumption.

TYRE SIZE	PR	LOAD INDEX	SPEED SYMBOL	TREAD DEPTH
				(MM)
385/65R22.5	20	160	K	15.5
385/65R22.5	24	164	K	15.5

POSITIONS → 

ASR+ /

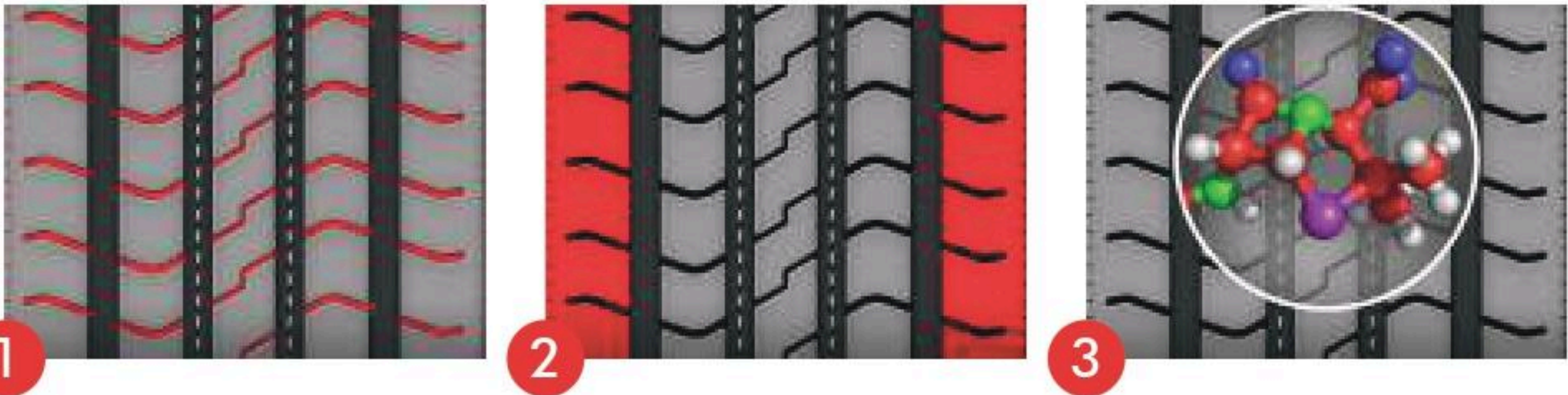


- 1. **PREVENTS STONE RETENTION**, groove bottom protectors prevent stone drilling and retention.
- 2. **EVEN SHOULDER WEAR**, solid shoulders help even wear while delivering precise steering and manoeuvring ability.
- 3. **EXCELLENT TRACTION**, optimised siping on inner ribs improves handling and yields excellent traction.

TYRE SIZE	PR	LOAD INDEX	SPEED SYMBOL	TREAD DEPTH
				(MM)
225/70R19.5	14	128/126	L	12.8
245/70R19.5	16	136/134	L	13.0
265/70R19.5	14	140/138	L	13.5
265/70R19.5	18	143/141	L	13.5
255/70R22.5	16	140/137	L	12.0
275/70R22.5	18	148/145	L	15.0
11R22.5	16	146/143	M	15.0

POSITIONS →

ASR1+ /

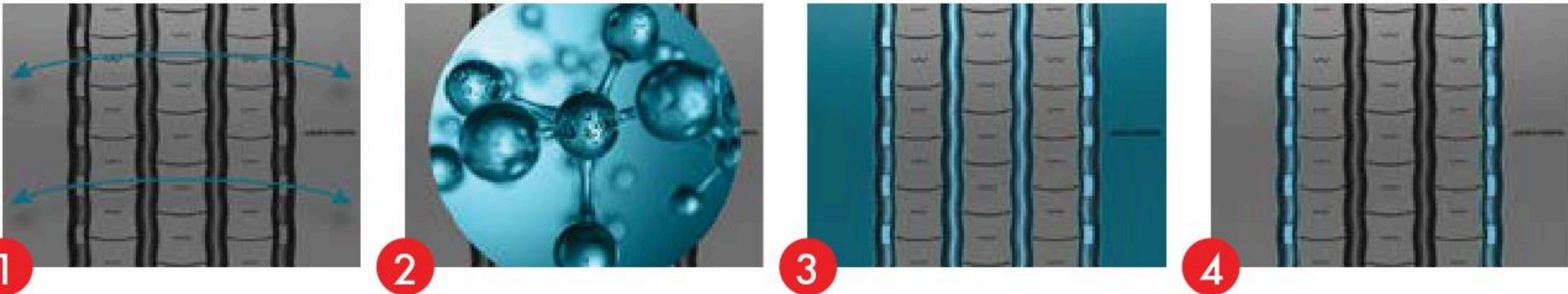


- 1. **EXCELLENT ROAD GRIP**, siping on the tread offers remarkable road grip in both dry and wet conditions.
- 2. **ENHANCED CORNERING AND LONG MILEAGE**, square shoulders combat irregular wear, enhancing cornering and delivering long mileage.
- 3. **EXTRAORDINARY RESISTANCE**, a special tread compound offers extraordinary resistance against abrasion.

TYRE SIZE	PR	LOAD INDEX	SPEED SYMBOL	TREAD DEPTH
				(MM)
12R22.5	16	152/148	M	16.0
12R22.5	18	152/149	L	16.0
295/80R22.5	16	152/148	M	16.0
315/80R22.5	20	156/150	L	16.0



ASR12/



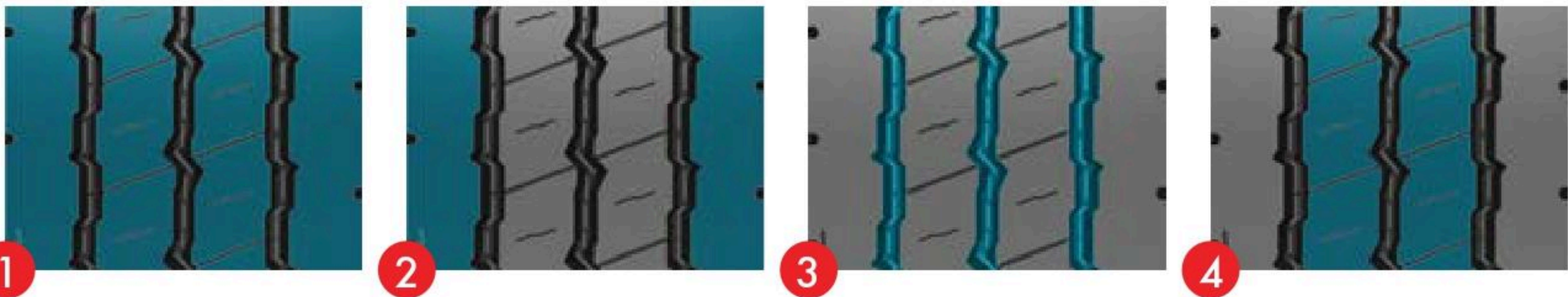
- 1. **A WIDE TREAD PATTERN** with sipes in three center ribs provides exceptional grip across all road conditions.
- 2. **LOW HYSTERESIS COMPOUND** leads to low rolling resistance and better fuel efficiency, while delivering extraordinary mileage.
- 3. **SOLID SHOULDER RIBS** with four grooves provide excellent handling and driving stability.
- 4. **INNOVATIVE OUTER GROOVES** with a variable groove angle design and stone ejectors reduce stone retention and drilling for enhanced casing life.

TYRE SIZE	PR	LOAD INDEX	SPEED SYMBOL	TREAD DEPTH
				(MM)
205/75R17.5	12	124/122	M	12.0
215/75R17.5	12	126/124	M	12.0
215/75R17.5	14	128/126	M	12.0
225/75R17.5	14	129/127	M	12.0
235/75R17.5	14	132/130	M	12.0
245/70R17.5	16	136/134	M	12.0
265/70R17.5	16	140/138	M	13.0
245/70R19.5	16	136/134	M	13.0
265/70R19.5	14	140/138	M	13.0
285/70R19.5	16	146/144	M	13.0
315/80R22.5	20	156/150	K	-
13R22.5	18	156/150	K	-

POSITIONS 



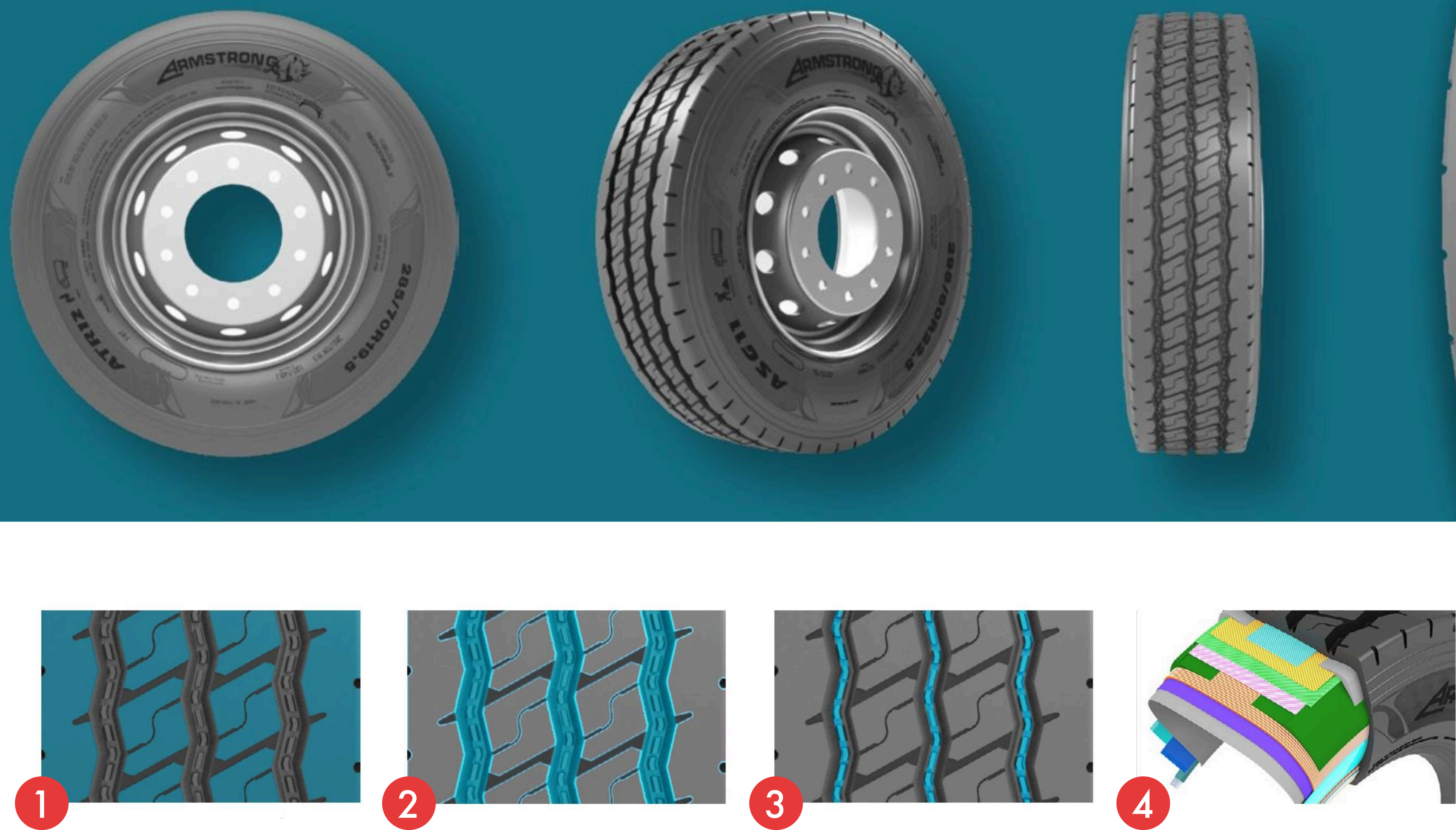
ASM11 /



- 1. **A FUSION OF RIB AND LUG TREAD** designs provide better traction and reduced braking distance.
- 2. **A SET OF WIDE, SOLID SHOULDER** offer enhanced protection for the casing during all road conditions.
- 3. **STONE EJECTORS IN ALL THREE GROOVES** increases tyre rigidity.
- 4. **A SPECIAL TREAD BLOCK** designed for mixed applications featuring wide and deep grooves.

TYRE SIZE	PR	LOAD INDEX	SPEED SYMBOL	TREAD DEPTH
				(MM)
13R22.5	18	156/150	K	16.5
315/80R22.5	20	156/150	K	16.5

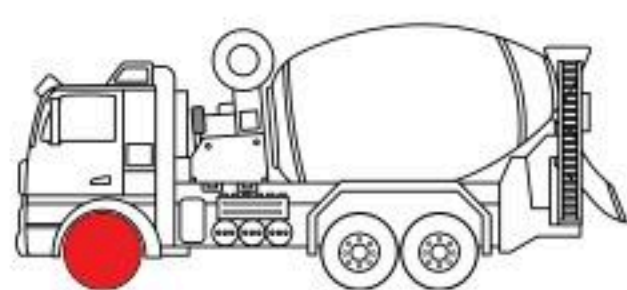
ASG11 /



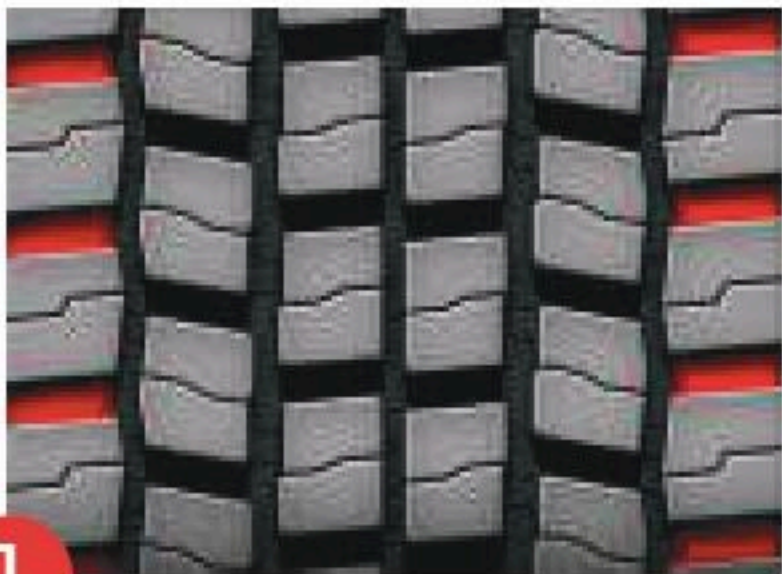
- 1. **4 WIDER RIBS AND DEEPER PATTERN** with a cut- and wear-resistant compound, which provides longer tread life and prevents uneven wear.
- 2. **WIDER TREAD WIDTH AND WIDE GROOVE DESIGN** for greater stability and traction in mixed road conditions.
- 3. **STONE EJECTOR IN ALL SLOTS** superior casing protection against stone penetration
- 4. **A ROBUST SHELL** stronger casing with four steel belts that improve tread life and retreadability.

TYRE SIZE	PR	LOAD INDEX	SPEED SYMBOL	TREAD DEPTH
				(MM)
12R22.5	16	152/148	K	19.0
295/80R22.5	16	152/148	K	19.0

POSITIONS →



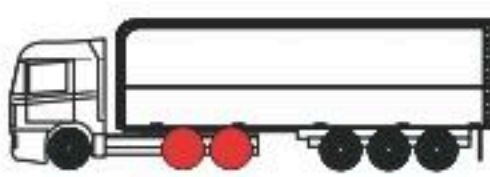
ADR1 /



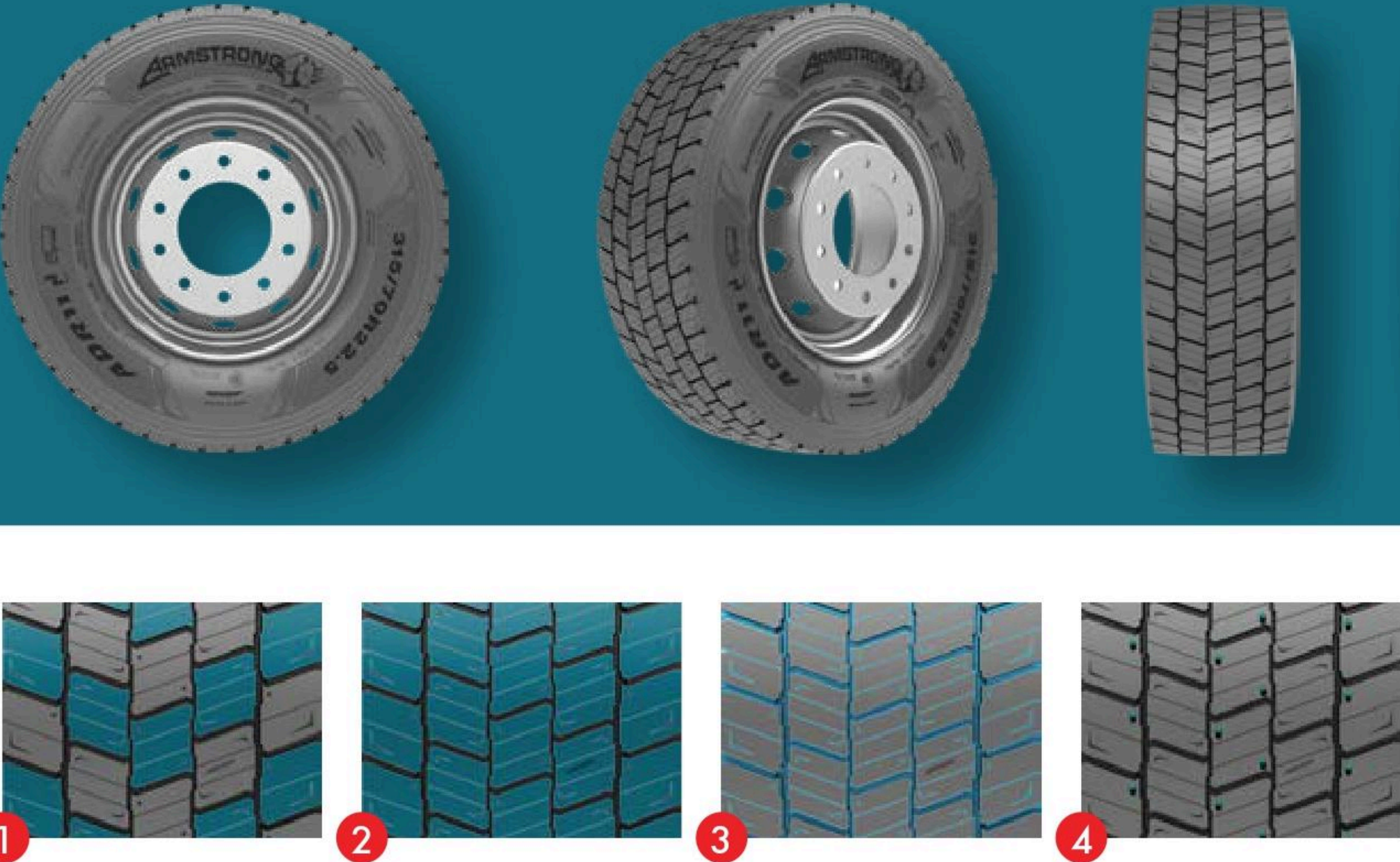
- 1. **QUICK WATER EVACUATION**, an open shoulder design provides quicker water evacuation which results in superior road grip.
- 2. **RESISTANCE AGAINST IRREGULAR WEAR**, optimised block shape and unique tread design prevent irregular wear and stone retention.
- 3. **PROLONGED LIFE SPAN**, deeper grooves ensure better traction and prolonged tire life.

TYRE SIZE	PR	LOAD INDEX	SPEED SYMBOL	TREAD DEPTH
				(MM)
225/70R19.5	14	128/126	L	15.0
245/70R19.5	16	136/134	L	15.0
12R22.5	16	152/148	M	22.0
12R22.5	18	152/159	L	22.0
295/80R22.5	16	152/148	M	22.0
315/80R22.5	20	156/150	L	22.0

POSITIONS →



ADR11 /

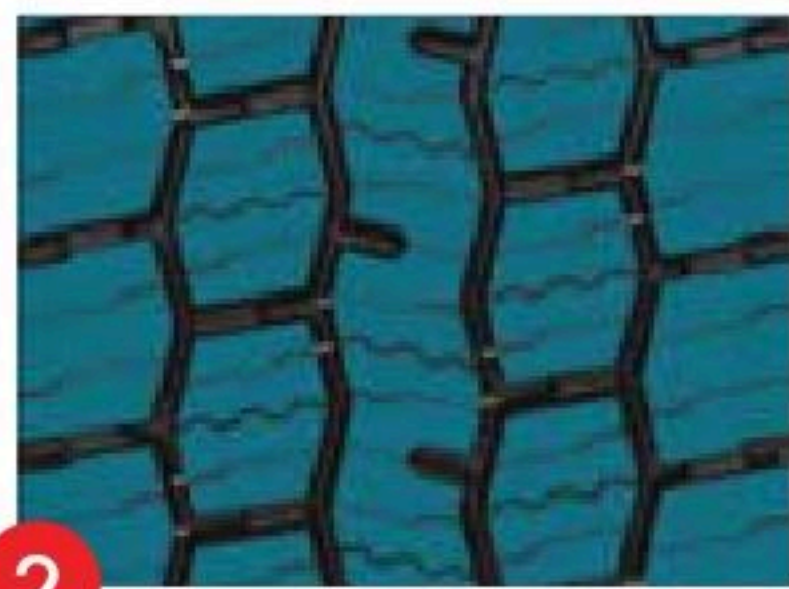
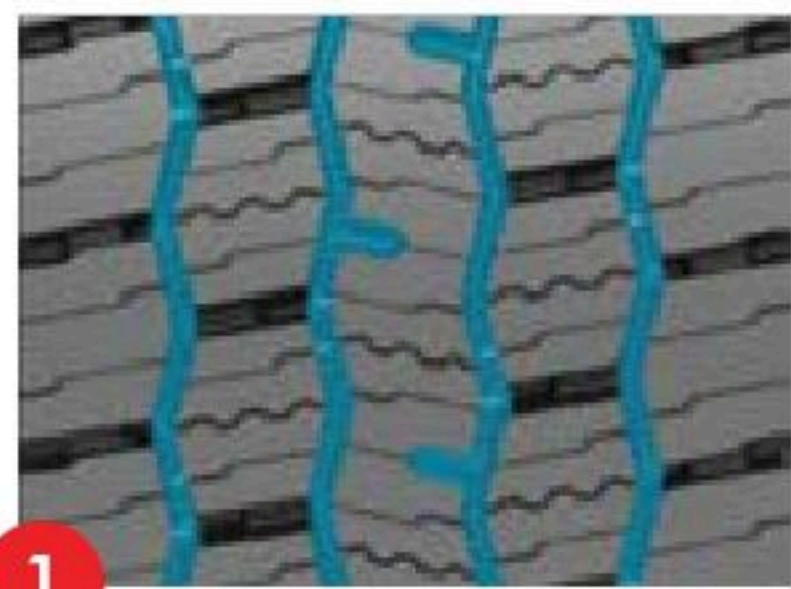
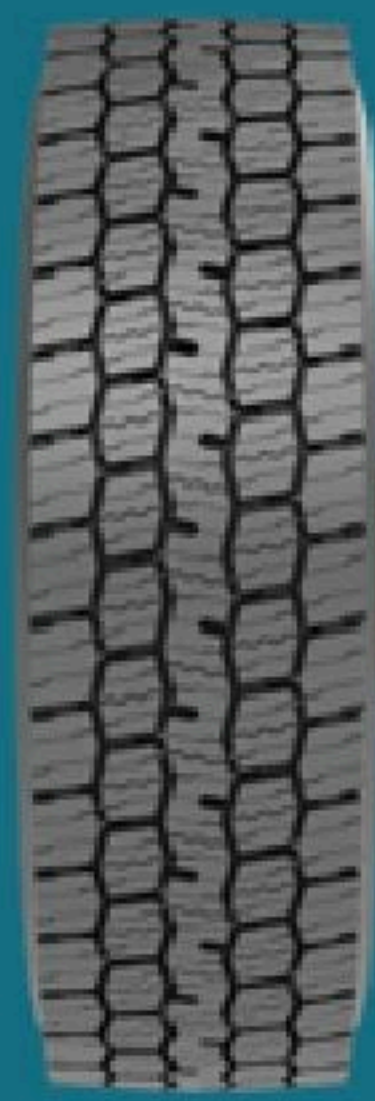


- 1. **A UNIQUE DIRECTIONAL TREAD** design provides better traction during all weather conditions.
- 2. **COMPACT AND RIGID TREAD BLOCKS** equipped with varying sipe designs to reduce noise.
- 3. **HIDDEN LONGITUDINAL & TRANSVERSAL GROOVES** ensure grip & traction throughout the lifetime.
- 4. **3D SIPES AND DEEP HOLES** in the tread blocks ensure quicker water evacuation.

TYRE SIZE	PR	LOAD INDEX	SPEED SYMBOL	TREAD DEPTH
				(MM)
295/80R22.5	16	152/148	M	16.5
315/80R22.5	20	156/150	L	16.5
315/70R22.5	16	154/150	L	16.5
295/60R22.5	16	150/147	L	16.5
315/60R22.5	16	152/148	L	16.5



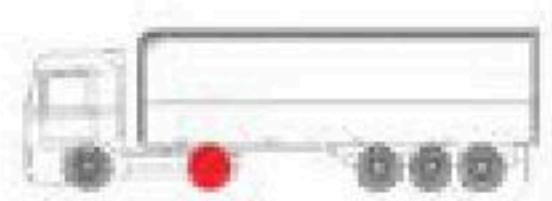
ADR12/



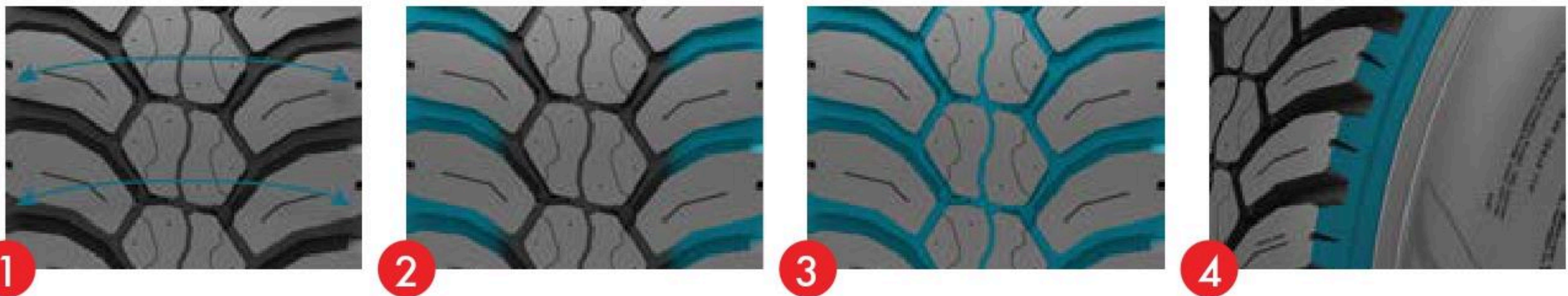
1. **FOUR CHANNEL PATTERN WITH ZIG-ZAG GROOVES** for longer tread life with excellent traction on all road conditions.
2. **A COMBINATION OF "RIB AND BLOCK" PATTERN STRUCTURE** resists irregular wear (heel & toe wear).
3. **WIDE OPEN SHOULDER TREAD DESIGN** for enhanced stability, longer mileage and better handling performance.
4. **UNIQUE SIPES ON ALL TREAD BLOCKS** enhance wet grip & snow grip performance.

TYRE SIZE	PR	LOAD INDEX	SPEED SYMBOL	TREAD DEPTH
				(MM)
205/75R17.5	12	124/122	M	12.5
215/75R17.5	12	126/124	M	13.5
225/75R17.5	14	129/127	M	13.0
235/75R17.5	14	132/130	M	13.0
245/70R17.5	16	136/134	M	13.0
265/70R17.5	16	140/138	M	15.0
265/70R19.5	14	140/138	M	15.0
285/70R19.5	16	146/144	M	15.0

POSITIONS →



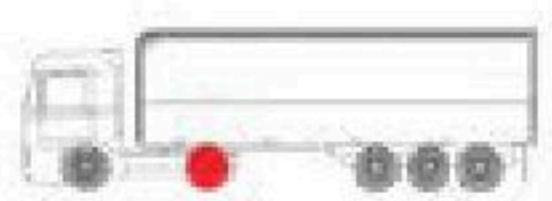
ADM11 /



- 1. **A WIDE AND DEEP TREAD** design delivers longer mileage and extraordinary stability.
- 2. **AN OPEN SHOULDER DESIGN** enables quicker water and mud evacuation.
- 3. **VARIABLE-WIDTH GROOVES** lead to lower stone retention while protecting the casing for enhanced retreadability.
- 4. **AN IMPROVED BLOCK PROFILE** resists off- road abuse and reduces tread wear and tear.

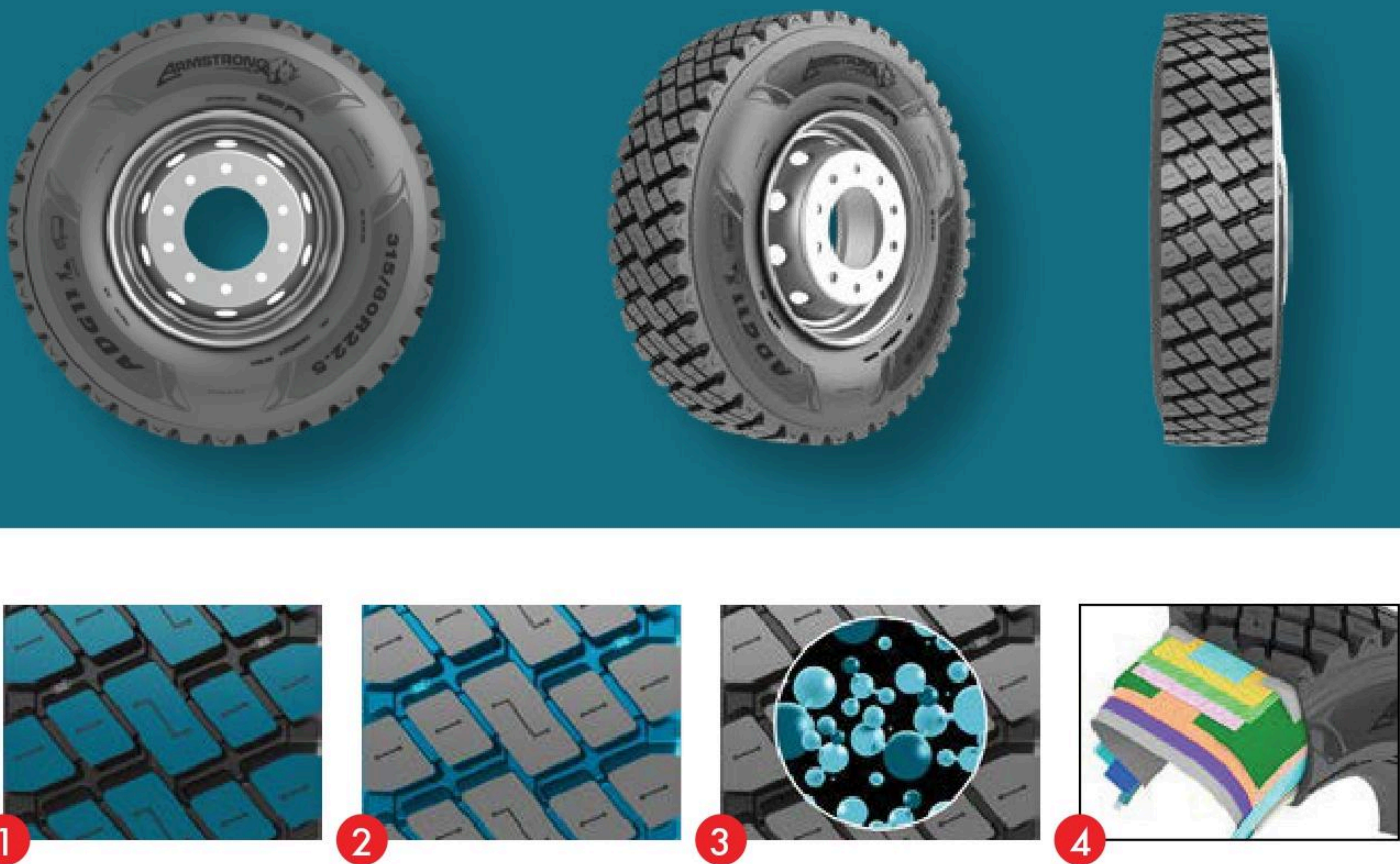
TYRE SIZE	PR	LOAD INDEX	SPEED SYMBOL	TREAD DEPTH
				(MM)
13R22.5	18	156/150	K	21.0
315/80R22.5	20	156/150	K	21.0

POSITIONS →



ADG11 /

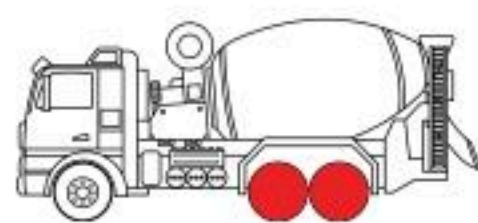
NEW



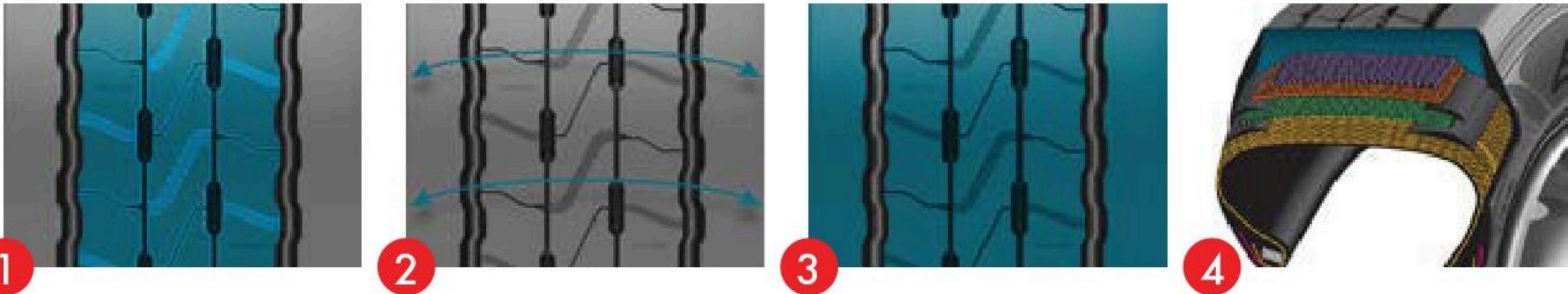
- 1. **OPEN SHOULDER AND BLOCK DESIGN** for excellent traction and release the heat for high durability.
- 2. **WIDER OPTIMIZED GROOVES WITH STONE EJECTORS** to prevent stone trapping and improve the retreadability.
- 3. **CUT CHIP RESISTANCE TREAD COMPOUND** to resist the pattern tearing and provide longer mileage and low CPK.
- 4. **A ROBUST CASING** stronger casing with four steel belts enhance service life and retreadability.

TYRE SIZE	PR	LOAD INDEX	SPEED SYMBOL	TREAD DEPTH
				(MM)
12R22.5	16	152/148	K	22.5
295/80R22.5	16	152/148	K	22.5
315/80R22.5	20	156/150	K	22.5

POSITIONS →



ATH11 /

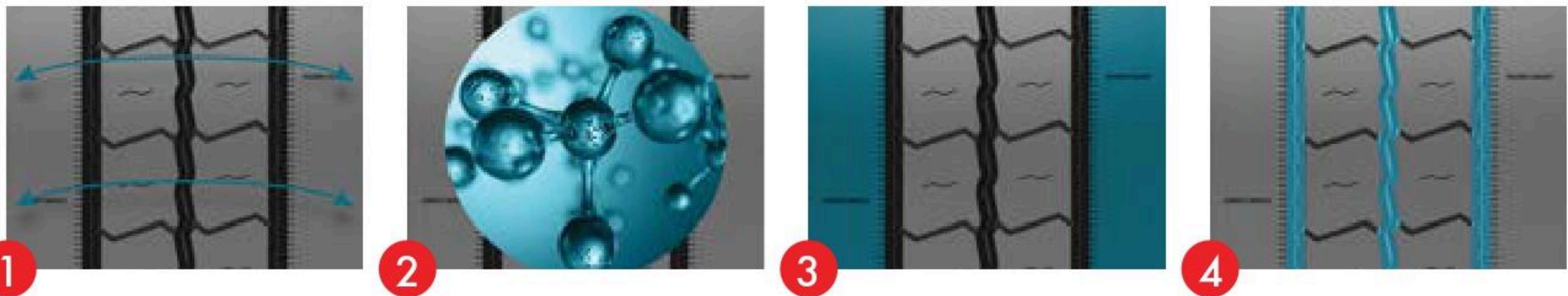
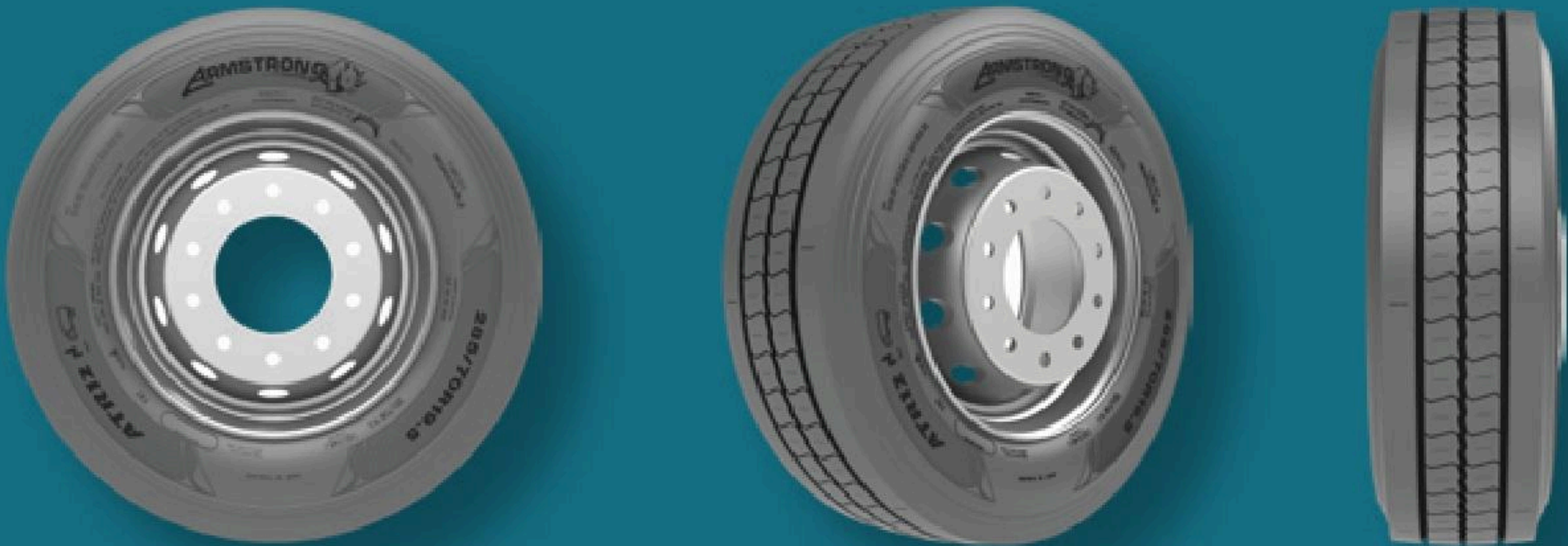


- 1. **SELF-GENERATING, INNOVATIVE TREAD DESIGN** with hidden longitudinal grooves and sipes in three center ribs provides better traction throughout the tyre's lifespan.
- 2. **WIDER TREAD PATTERN WITH SOLID SHOULDER RIBS** and a special tread formula provide optimal footprint while resisting lateral scrubbing.
- 3. **OPTIMIZED TREAD AND LOW HYSTERESIS COMPOUND** provides lower rolling resistance leading to better fuel efficiency and higher mileage.
- 4. **STRONGER BODY PLY AND FOUR STEEL BELTS** enhance service life and retreadability.

TYRE SIZE	PR	LOAD INDEX	SPEED SYMBOL	TREAD DEPTH
				(MM)
385/55R19.5	18	156	J	13.0
435/50R19.5	18	160	J	13.0
435/50R19.5	20	164	J	13.0
445/45R19.5	20	160	J	13.0
445/45R19.5	22	164	J	13.0
385/55R22.5	20	160	K	14.5
385/65R22.5	20	160	K	14.5
385/65R22.5	24	164	K	14.5



ATR12/

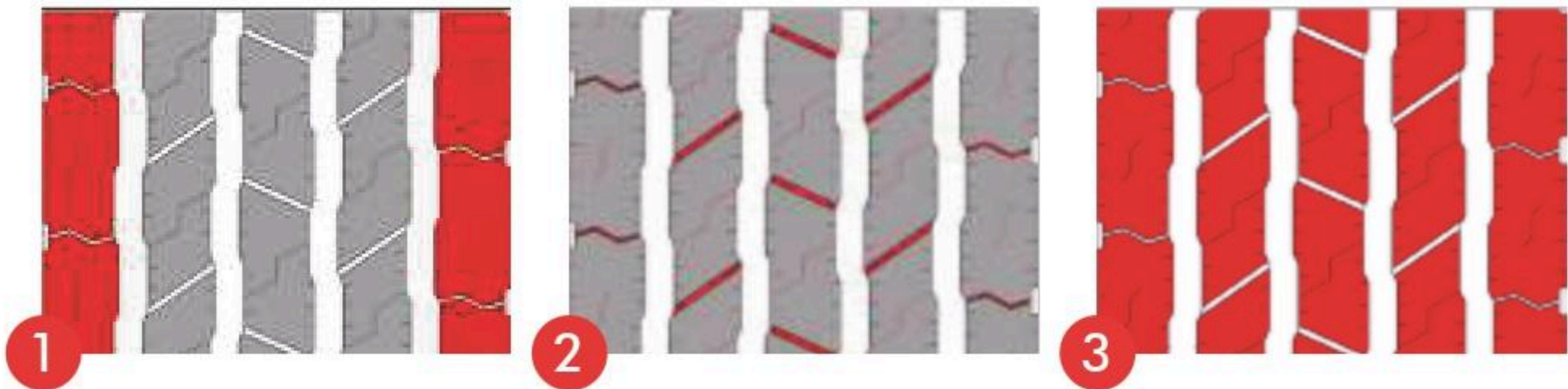
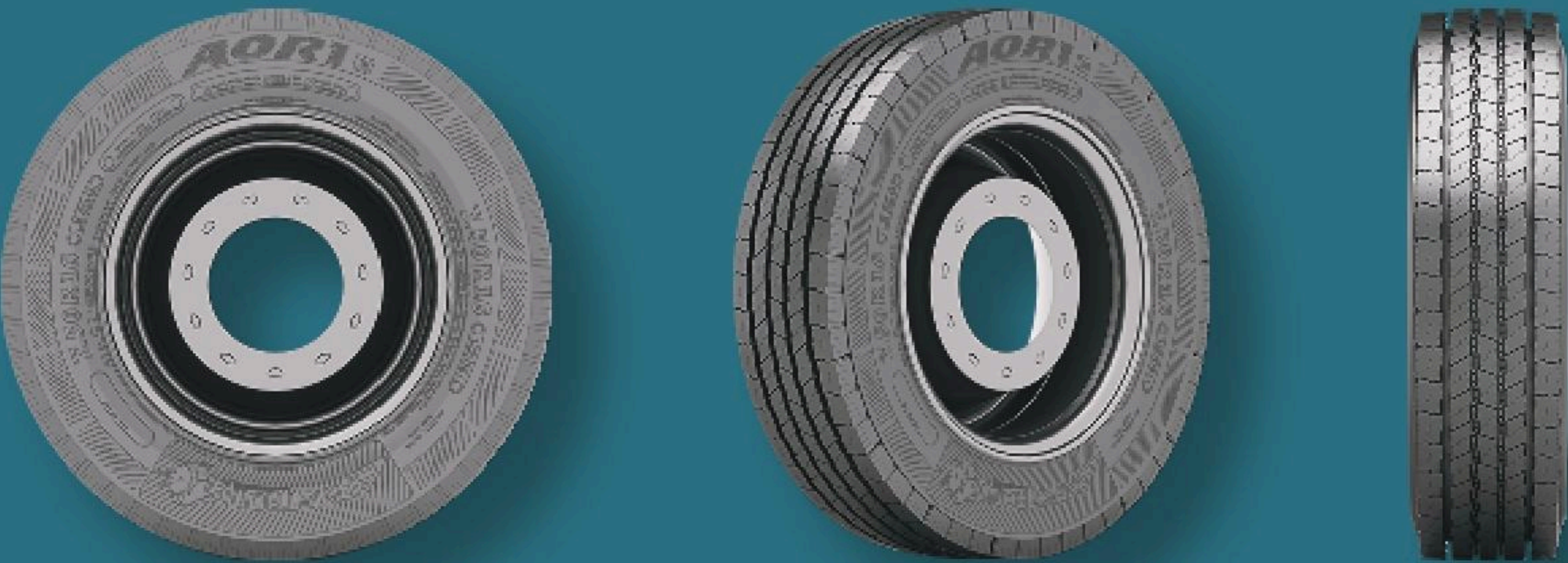


- 1. **WIDE TREAD WITH INCREASED TREAD CONTACT** area helps reduce irregular wear.
- 2. **IMPROVED TREAD COMPOUND** leads to low rolling resistance and better fuel efficiency.
- 3. **SOLID SHOULDER RIBS** enable efficient braking on dry & wet surfaces.
- 4. **INNOVATIVE CIRCUMFERENTIAL GROOVE** design offers quicker water evacuation while improving trailer stability.

TYRE SIZE	PR	LOAD INDEX	SPEED SYMBOL	TREAD DEPTH
				(MM)
205/65R17.5	18	132/130	J	11.0
215/75R17.5	16	135/133	J	12.0
235/75R17.5	18	143/141	J	12.0
245/70R17.5	18	143/141	J	12.5
245/70R19.5	18	141/140	J	12.0
265/70R19.5	18	143/141	J	12.0
285/70R19.5	18	150/148	J	12.0



AOR1 /

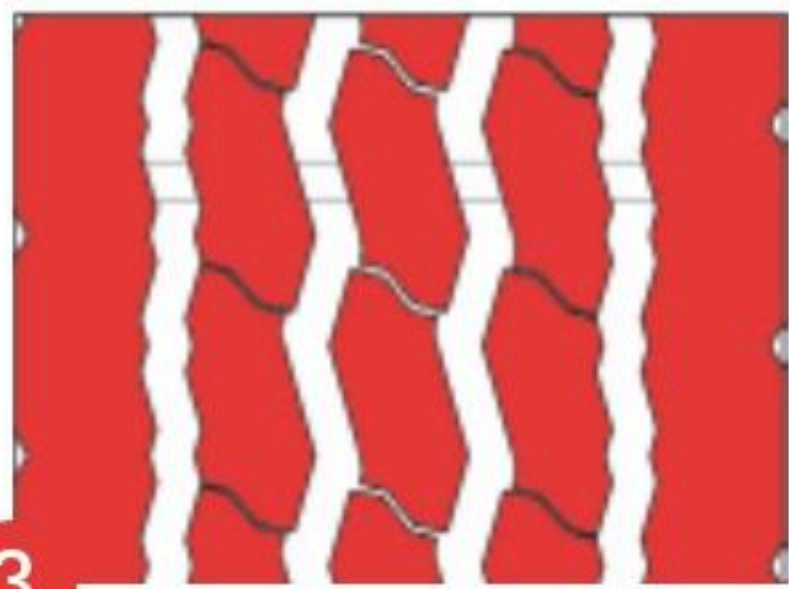
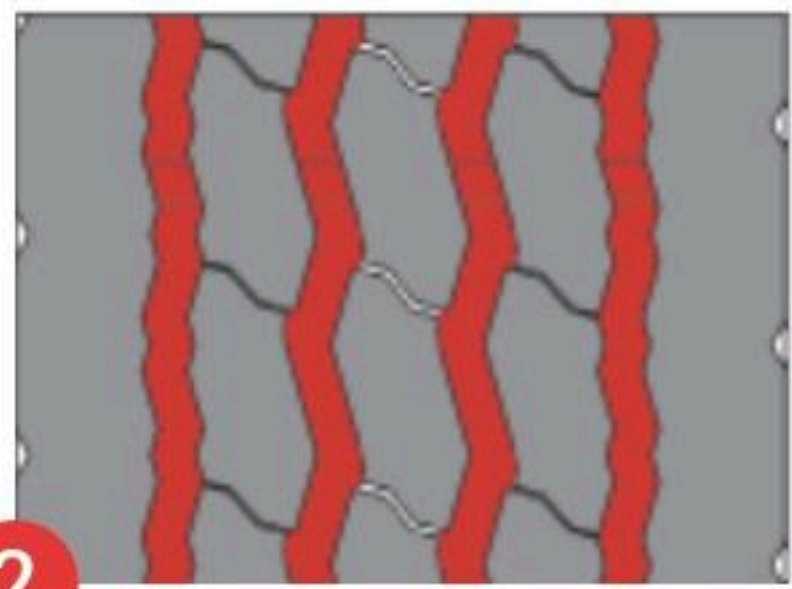
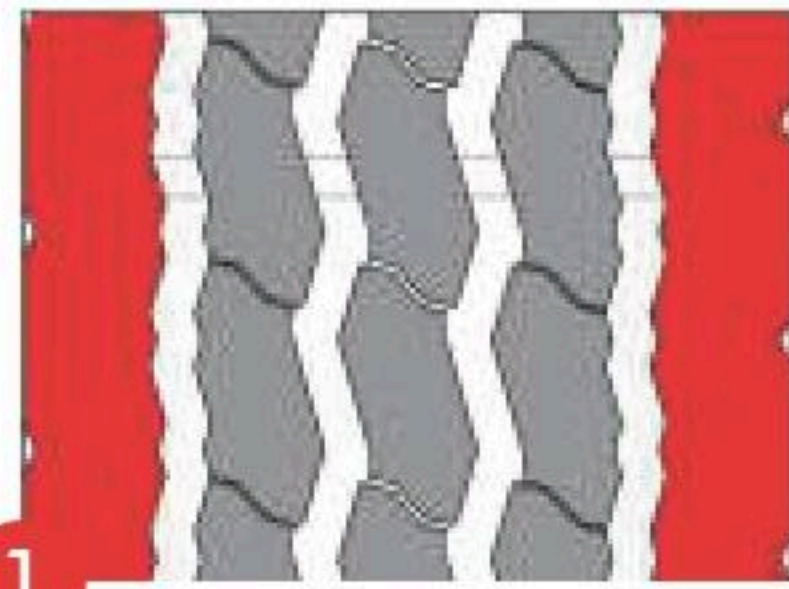


- 1. **SPECIALLY DESIGNED SHOULDERS** help in preventing heel & toe wear ensuring longer life.
- 2. **OPTIMAL PLACEMENT OF SIPES** deliver improved traction and grip, thereby reducing braking distance both in dry and wet conditions.
- 3. **VERSATILE TREAD DESIGN** with stepped ribs ensure improved handling and driving stability.

TYRE SIZE	PR	LOAD INDEX	SPEED SYMBOL	TREAD DEPTH
				(MM)
7.50R16 (TTF)	14	122/118	L	13.5



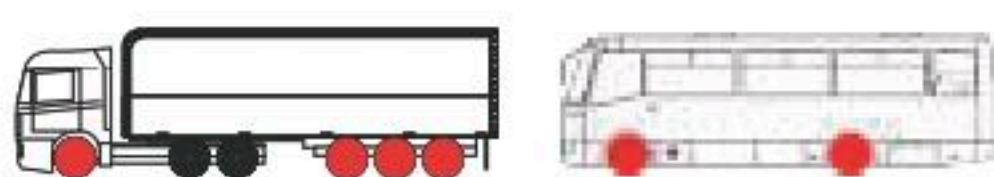
AOR3 /



- 1. **URBAN PATTERN** with extra thick sidewall offers protection against shocks, impacts and kerb scrubbing.
- 2. **A FIVE-RIB WIDE TREAD AND SIPES** ensure excellent handling and grip on both dry and wet road conditions.
- 3. **SIDEWALL WEAR INDICATORS** signal when it is time for tyre rotation to avoid damage to the body ply for safety and retreadability.

TYRE SIZE	PR	LOAD INDEX	SPEED SYMBOL	TREAD DEPTH
				(MM)
11.00-20 (TTF)	16	150/146	K	14.0

POSITIONS →



AOM1 /



- 1. **RESISTANCE AGAINST IRREGULAR WEAR**, a special zigzag tread design offers extraordinary resistance to cuts, chips, tearing and irregular wear, making it ideal for high scrub urban application.
- 2. **INCREASED LONGEVITY AND LONGER MILEAGE**, a deeper tread design delivers exceptional traction and longer mileage, while wider circumferential grooves quickly evacuate mud and silt.
- 3. **SIDEWALL WEAR INDICATORS** signal when it is time for tyre rotation to avoid damage to the body ply for safety and retreadability.

TYRE SIZE	PR	LOAD INDEX	SPEED SYMBOL	TREAD DEPTH
				(MM)
11R22.5	14	144/142	K	15.5
11R22.5	16	148/145	K	16.0
11R24.5	16	149/146	K	19.3
12R24.5	16	152/149	K	18.5



AOM2 /



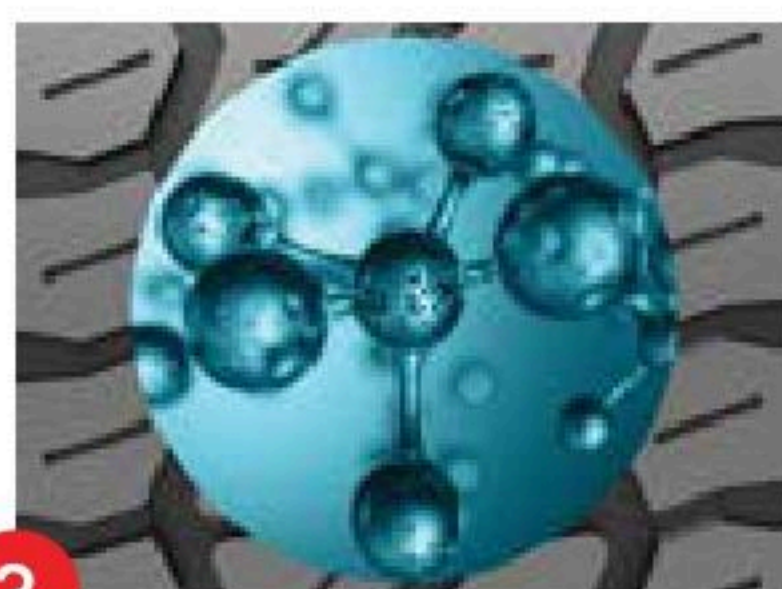
- 1. **WIDER ZIGZAG GROOVES** offer superb water evacuation and excellent performance on & off road.
- 2. **UNIQUE BLOCKS & SIPES DESIGN** resists cuts & chips in mixed service applications.
- 3. **DEEPER TREAD PATTERN** delivers longer mileage and tread life.
- 4. **SOLID, WIDE & CLOSED SHOULDER RIBS** resist scrubbing while manoeuvring.

TYRE SIZE	PR	LOAD INDEX	SPEED SYMBOL	TREAD DEPTH
				(MM)
12.00R24 (TTF)	20	160/156	K	14.0



AOM11 /

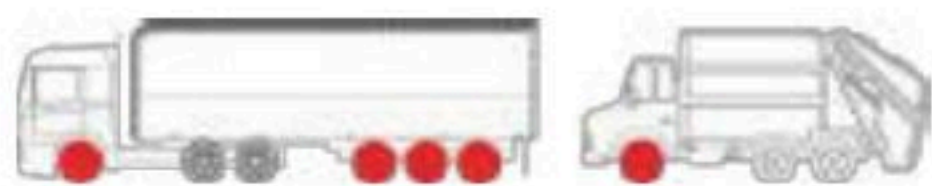
NEW



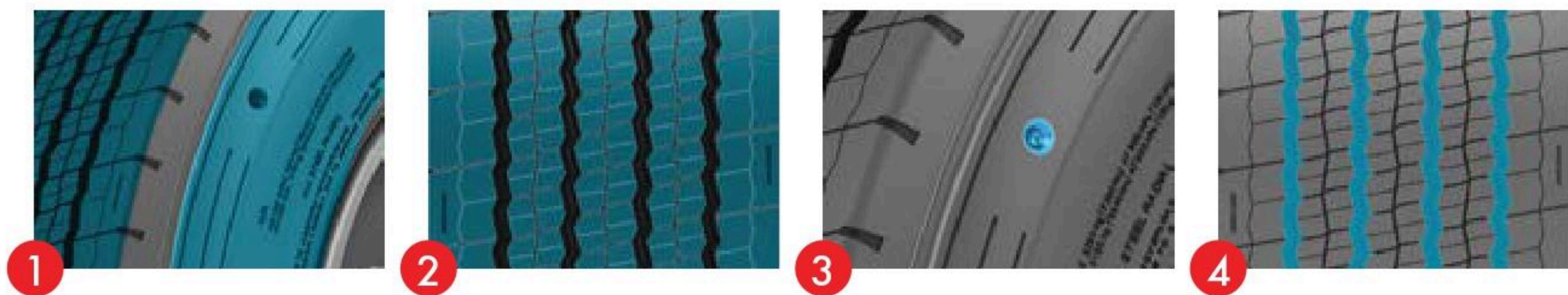
1. **WIDE TREAD BLOCK DESIGN** with optimized tie bar to ensure even wear and excellent traction for on-off road condition.
2. **EXTRA WIDE GROOVE DESIGN** to avoid stone trapping and provide excellent traction.
3. **SPECIAL CUT/CHIP TREAD COMPOUND** to resist off road abuse and provide higher mileage.

TYRE SIZE	PR	LOAD INDEX	SPEED SYMBOL	TREAD DEPTH
				(MM)
385/65R22.5	20	160	K	18.0
385/65R22.5	24	164	K	18.0
425/65R22.5	20	165	K	18.0
445/65R22.5	20	169	K	17.0

POSITIONS →



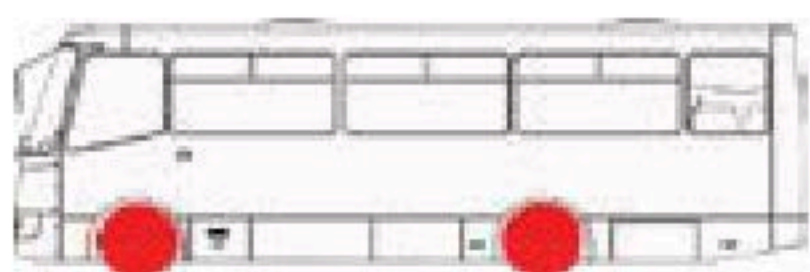
AOU11 /



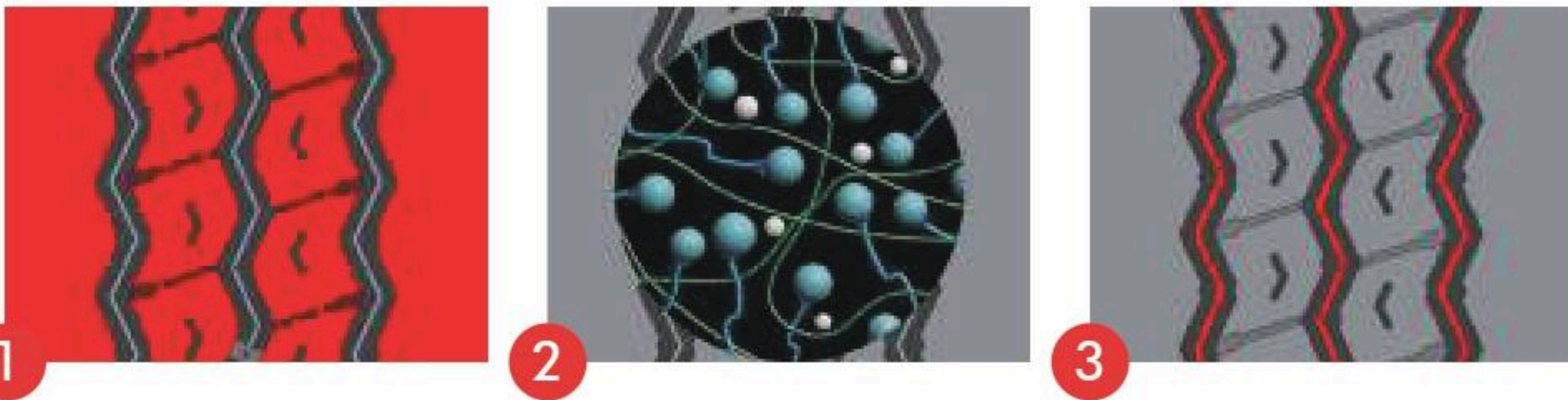
- 1. **URBAN PATTERN** with extra thick sidewall offers protection against shocks, impacts and kerb scrubbing.
- 2. **A FIVE-RIB WIDE TREAD AND SIPES** ensure excellent handling and grip on both dry and wet road conditions.
- 3. **SIDEWALL WEAR INDICATORS** signal when it is time for tyre rotation to avoid damage to the body ply for safety and retreadability.
- 4. **SPECIAL GROOVES** designed to avoid stone trap and casing damage.

TYRE SIZE	PR	LOAD INDEX	SPEED SYMBOL	TREAD DEPTH
				(MM)
275/70R22.5	16	150/148	J	17.0

POSITIONS →



AOWH+ /



- 1. **A FOUR-RIB PATTERN** with solid shoulders pattern especially designed for high-scrub garbage-haul application which maximises tread volume rubber for longer mileage & resists irregular wear.
- 2. **AN OPTIMISED TREAS COMPOUND** offers cut and chip resistance, lower heat build-up and longer mileage.
- 3. **STONE EJECTORS IN ALL GROVES** prevent damage from stones and road hazards, enhancing tire life.

TYRE SIZE	PR	LOAD INDEX	SPEED SYMBOL	TREAD DEPTH (MM)
315/80R22.5	20	161/157	K	18.5



armstrong-mea.com

TBR/MEA/JUN/2025

